

Lilly Preserve

Access

For the Blue Loop, park at the entrance on Good Hill Road (Route 317), 2 miles east of the Roxbury green. For most direct access to the Red Loop, use the Old Tophet Road entrance. This can be reached by continuing on Good Hill Road another mile past the first entrance, turning left onto Welton Road and then left onto Old Tophet Road for 0.5 mile to the parking area.

Donors

128 acres – Gift of Thomas Robert Lilly in 1975

4 acres – Gift of Dione Todd Lilly Bowers in 1980

8 acres – Gift of Thomas R. Bowers and Stewart M. Bowers in 1981

van Deusen Preserve

Access

The preserve is located on Bacon Road. From the Roxbury green, follow Good Hill Road (Route 317) east for 2.1 miles. Turn right onto Bacon Road. The trail entrance is ahead 0.3 miles on the right. Parking is along the side of the road.

Donor

21 acres – Gift of Maidza van Deusen in 1986



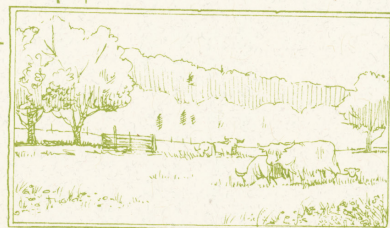
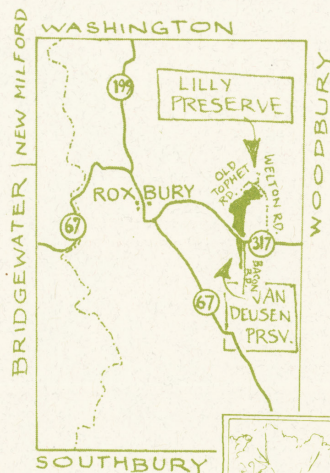
ROXBURY LAND TRUST

P.O. Box 51 • 7 South Street • Roxbury, CT 06783
Telephone: (860)350-4148 • E-mail: roxbury.land.trust@snet.net

Trail Map made possible with the support of the Ellen Knowles Harcourt Foundation.

Maps and Illustrations by Billy Steers. Design by Carole Mackay.

Printed Summer 2008



Highland Cattle grazing on Lilly Preserve field.

Lilly Preserve van Deusen Preserve

Trail Map



ROXBURY LAND TRUST

Since 1970



ROXBURY LAND TRUST
Since 1970

Lilly Preserve

140 Acres

van Deusen Preserve

21 Acres

The Blue Loop passes through marshland and wooded swampland on or near the banks of Jack's Brook. Hikers may encounter Scottish Highland cattle grazing in the field off Good Hill Road and will see irregular mounds of tussock sedge and plenty of red maples as they proceed along an old farm road.

The Red Loop traverses the upper wooded portion of the preserve and contains mixed hardwoods, rock outcroppings and old stone walls. Watch for the old apple orchard, mill pond and sawmill site. The preserve abuts the Gavel Family Farm Preserve.

Distance Blue Loop = 1.5 miles
Red Loop = 1 mile

Difficulty Moderate. The Blue Loop has many wet, swampy areas. The Red Loop has some relatively steep climbs.

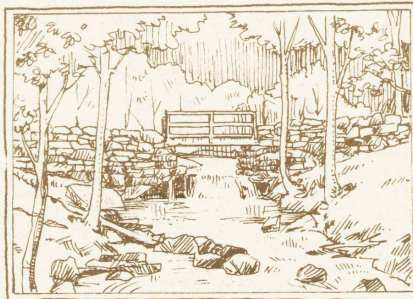
van Deusen Preserve

Jack's Brook travels through the preserve, which is primarily a swamp.

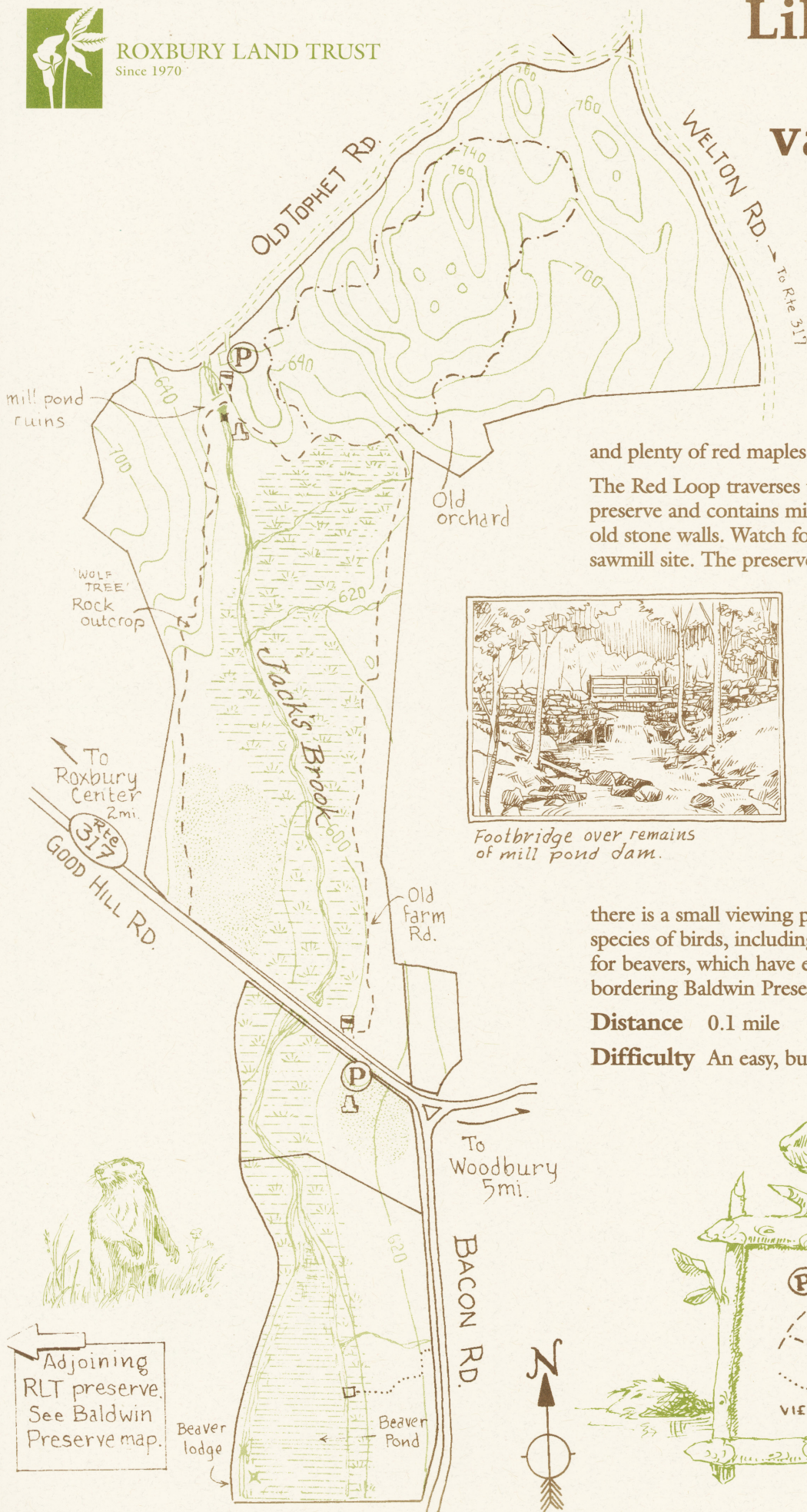
The short trail leads from Bacon Road down to the edge of the water where there is a small viewing platform. The preserve is host to many species of birds, including several types of waterfowl. Also watch for beavers, which have erected a lodge across the pond near the bordering Baldwin Preserve.

Distance 0.1 mile

Difficulty An easy, but wet walk with boardwalks.



Footbridge over remains of mill pond dam.



Adjoining
RLT preserve.
See Baldwin
Preserve map.